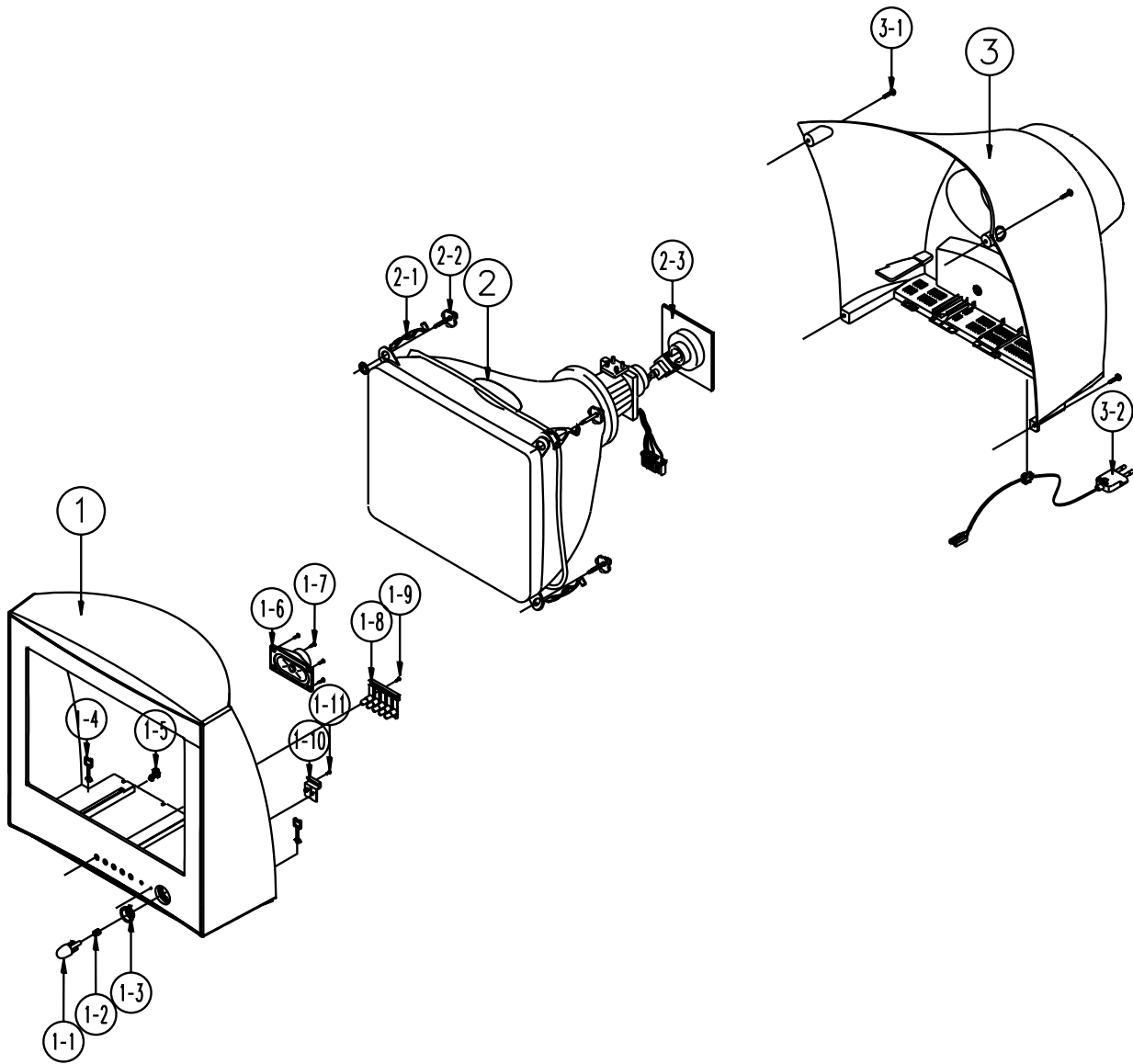


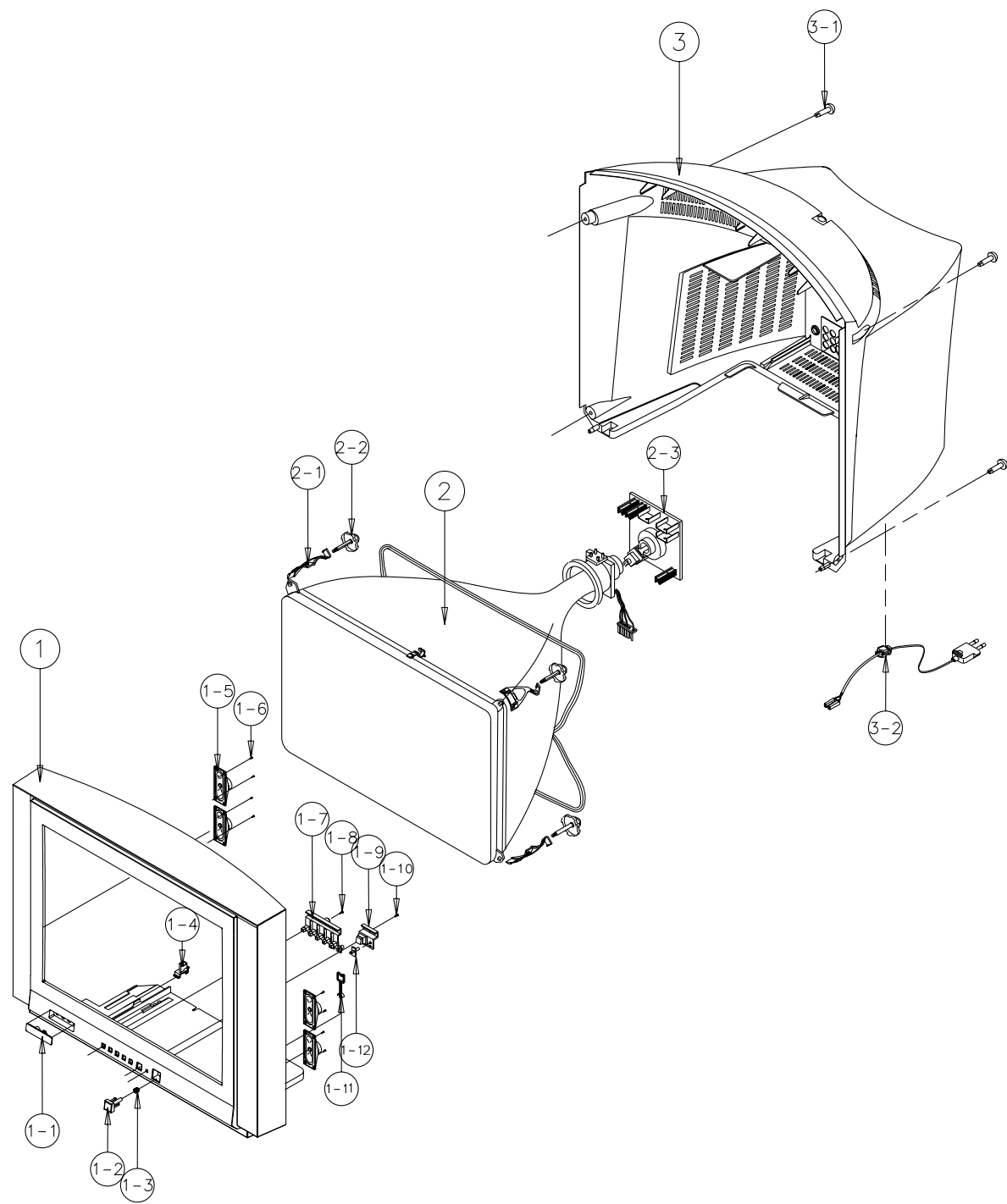
6. Exploded View & Parts List

6-1 CS15K2X/BWT



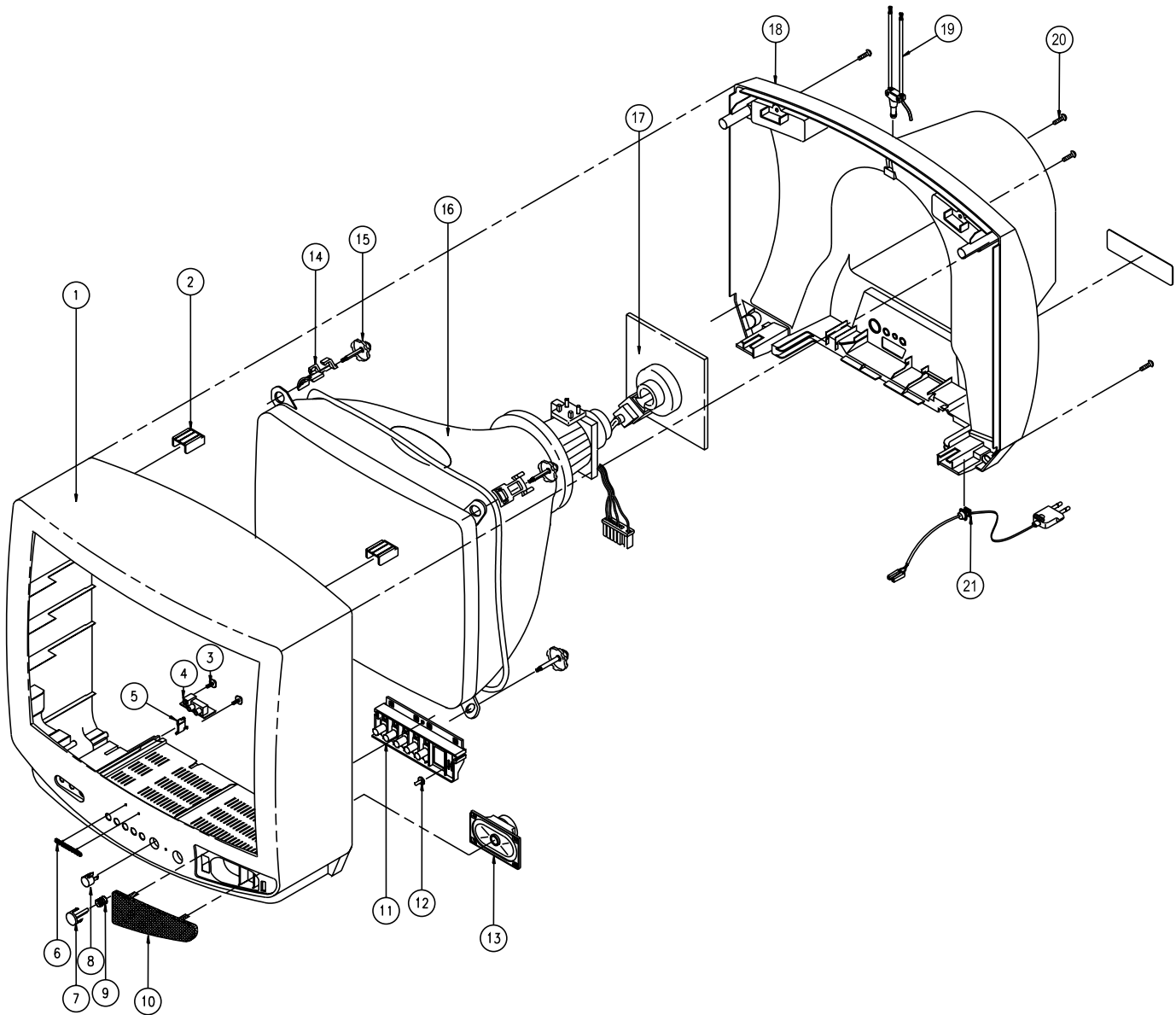
No	Code No	Description:Specification	Q'ty	Remark
1	AA91-00649C	ASSY CABINET FRONT;15K2,(SPK)SV012P MPP	1	
	AA64-01691D	CABINET FRONT;15K2,SV012P MPP,HIPS,HB,G7	1	
1-1	AA64-01693B	KNOB POWER;15K2,ABS,G3676,SV104M+W971,HB	1	
1-2	AA61-60003J	SPRING-CS;-;SUS304,0.5,OD6,H12,N7;-;-	1	
1-3	AA64-01697B	DECORATION-POWER;15K2,PC,SEMI-VIOLET	1	
1-4	AA65-30105A	CLAMP-WIRE;NYLON 66,V2,NTR,15MM,ALL MODE	1	
1-5	AA61-40113A	STOPPER-PCB;501H,HIPS;-;-HB,NTR;-	1	
1-6	AA96-00652A	ASSY SPEAKER;-;16OHM,3W,3001-001211,200M	1	
1-7	6003-001022	SCREW-TAPTITE;RH,+;B,M3,L12,ZPC(BLK),SWR	4	SPK+CF
1-8	AA64-01696B	KNOB CONTROL;15K2,ABS,G3676,SV104M+W971,	1	
1-9	6003-001026	SCREW-TAPTITE;RH,+;B,M4,L15,ZPC(BLK),SWR	1	KC+CF
1-10	AA64-01694B	WINDOW REMOCON;15K2,ACRYL,CLR	1	
1-11	6003-001026	SCREW-TAPTITE;RH,+;B,M4,L15,ZPC(BLK),SWR	1	WIN+CF
2	AA03-00146A	CRT COLOR;-;A36QDT351X,+380mG,15inch,90,	1	
2-1	AA65-30107A	CLAMP-D,COIL;NYLON 66,V2,NTR;-;20~22 INC	2	
2-2	AA60-10050R	SCREW-ASSY;-;SWRCH18A,M5,L31.5,HH,+;WC;-	4	CRT
2-3	3704-001105	SOCKET-CRT;11P,20PI,26.5PI,NI;-	1	
3	AA64-01692C	CABINET BACK;15K2,HIPS,V2,BLK	1	
3-1	AA60-10050T	SCREW-TAPPING;-;SWRCH18A,M4,L20,RH,+;2S,	4	CB+CF
3-2	AA96-20109B	ASSY-POWER,CORD;-;CP2/NO(4.0),H/C250,KKP	1	

6-2 CS15K8WX/BWT



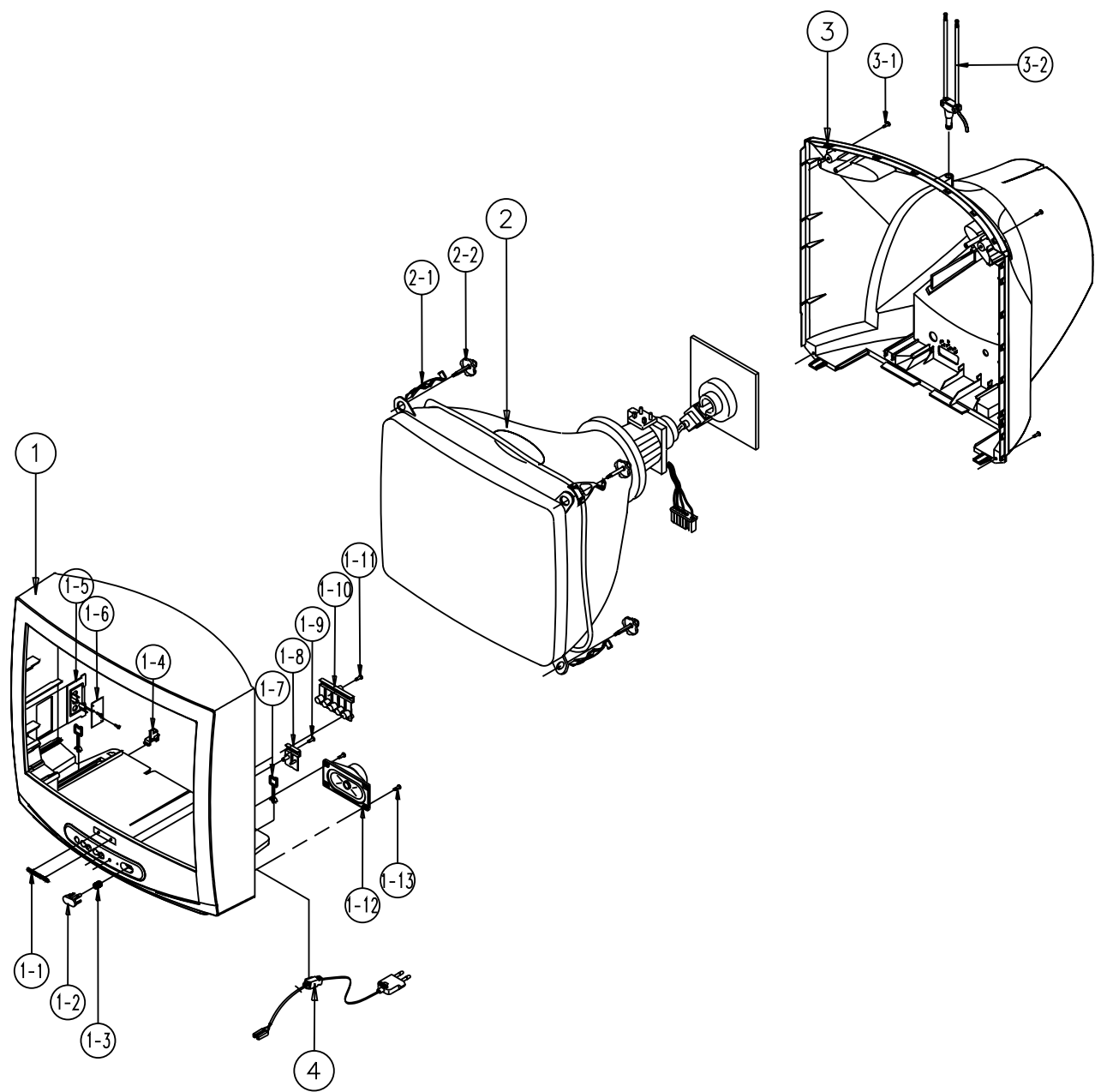
No	Code No	Description;Specification	Q'ty	Remark	
1	AA91-00619B	ASSY CABINET FRONT;15K8 CIS,(SPK)S012P+	1		
	AA64-01730F	CABINET FRONT;15K8,S012P+B115P CIS S/T,H	1		
	1-1	INLAY-COVER			
	1-2	AA64-01371C	KNOB POWER;15K8,ABS,G3676,SV012P+W971,HB	1	
	1-3	AA61-60003J	SPRING-CS;SUS304,0.5,OD6,H12,N7,-,-	1	
	1-4	AA61-40113A	STOPPER-PCB;501H,HIPS,-,-,HB,NTR,-	1	
	1-5	AA96-10137B	ASSY-SPEAKER;-80HM,3W,3001-001020,AA39-	4	
	1-6	6003-001019	SCREW-TAPTITE;RH,+,B,M4,L12,ZPC(BLK),SWR	8	SPK+CF
	1-7	AA64-01370C	KNOB CONTROL;15K8,ABS,G3676,SV012P+W971,	1	
	1-8	6003-001019	SCREW-TAPTITE;RH,+,B,M4,L12,ZPC(BLK),SWR	1	KC+CF
	1-9	AA64-00816B	WINDOW REMOCON;-21A8,-,PC,V0,VIOLET,-	1	
	1-10	6003-001019	SCREW-TAPTITE;RH,+,B,M4,L12,ZPC(BLK),SWR	1	WIN+CF
1-11	AA65-00011C	CLAMP-WIRE;ALL MODEL,NYLON 66,V2,NTR,25M	1		
1-12	AA64-00818B	INDICATOR LED;-21A8,-,ACRYL,-,CLR,-	1		
2	AA03-00146A	CRT COLOR;-A36QDT351X,+380mG,15inch,90,	1		
	2-1	AA65-30107A	CLAMP-D,COIL;NYLON 66,V2,NTR,-20-22 INC	2	
	2-2	AA60-10050R	SCREW-ASSY;-SWRCH18A,M5,L31.5,HH,+,WC,-	4	CRT+CF
	2-3	3704-001105	SOCKET-CRT;11P,20PI,26.5PI,NI,-	1	
3	AA64-01731C	CABINET BACK;15K8,HIPS,V2,BLK	1		
	3-1	AA60-10050T	SCREW-TAPPING;-SWRCH18A,M4,L20,RH,+,2S,	4	CB+CF
	3-2	AA96-20109B	ASSY-POWER,CORD;-CP2/NO(4.0),H/C250,KKP	1	

6-3 CS2073S/BWT



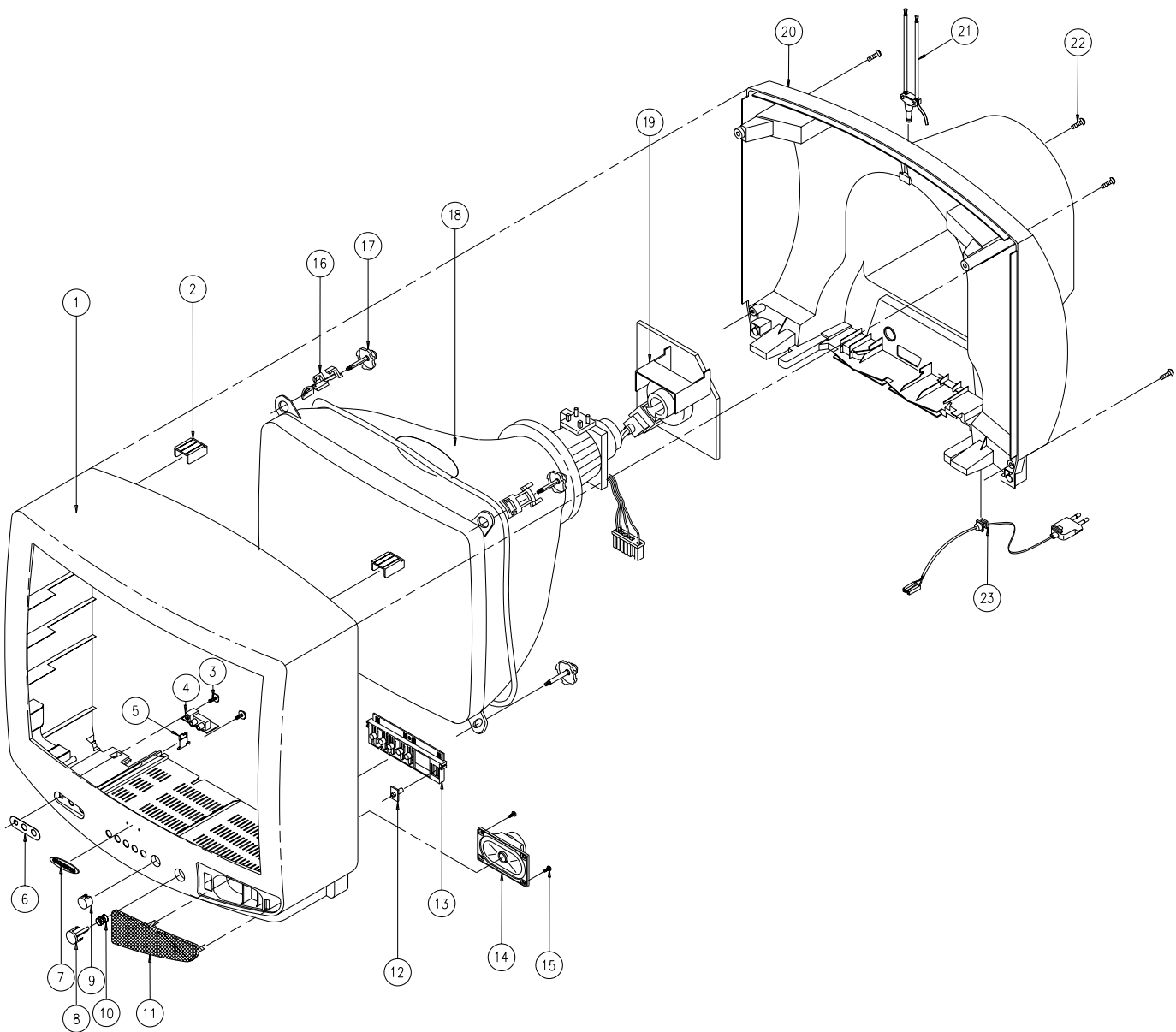
No	Code No	Description;Specification	Q'ty	Remark
1	AA91-00691B	ASSY CABINET FRONT;DP;5073,(SPK) BK708P	1	
	AA64-00233C	CABINET-FRONT;- ,5073,BK708P MLN,HIPS,HB,	1	
2	AA61-40010A	BOSS-WING;- ,HIPS,-,-,-,NTR,HB	2	
3	6006-001095	SCREW-ASS'Y TAPT;WP,BH,+,M4,L12,ZPC(YEL)	2	PA+CF
4	AA95-01042B	ASSY-PCB,A/V FRONT;DP;2139,KS1A,AA95-900	1	
5	AA61-40007A	STOPPER-PCB;5038.5368,HIPS HB,-,-,-,NTR,	1	
6	AA64-70127F	BADGE-BRAND;AL,SAMSUNG,SILVER,L40,R800,N	1	
7	AA64-10131A	KNOB-POWER;- ,5073,-,ABS,HB,BLK	1	
8	AA61-60003J	SPRING-CS;- ,SUS304,0.5,OD6,H12,N7,-,-,-	1	
9	AA64-40044B	WINDOW-REMOCON;- ,5073,-,PC,V0,VIOLET,-	1	
10	AA63-50095A	GRILLE-WOOFER;- ,5073,PA110 PI0.6,SECC,T0	1	
11	AA64-10039A	KNOB-CONTROL;- ,5073,-,ABS,HB,BLK	1	
12	AA64-40182A	INDICATOR-LED;- ,5073,-,ACRYL,-,-,-	1	
13	AA96-10140A	ASSY-SPEAKER;- ,16ohm3W,00003,AA320501C,R	1	
14	AA65-30107A	CLAMP-D,COIL;NYLON 66,V2,NTR,-,-20-22 INC	4	
15	AA60-10050R	SCREW-ASSY;- ,SWRCH18A,M5,L31.5,HH,+,WC,-	4	CRT+CF
16	AA03-10029W	CRT-COLOR;- ,A48KRD82X(H),+380mG,20,90de	1	
17	3704-001105	SOCKET-CRT;11P,20PI,26.5PI,NI,-	1	
18	AA64-30375D	CABINET-BACK;- ,5038.73,-,HIPS,V2,BLK,-,-	1	
19	AA42-00003A	ANT ROD;- ,3S,720mm,ABS,UL/CSA,-	1	
20	6003-001026	SCREW-TAPTITE;RH,+,B,M4,L15,ZPC(BLK),SWR	4	CB+CF
21	AA96-20109B	ASSY-POWER,CORD;- ,CP2/NO(4.0),H/C250,KKP	1	

6-4 CS21F5X/BWT



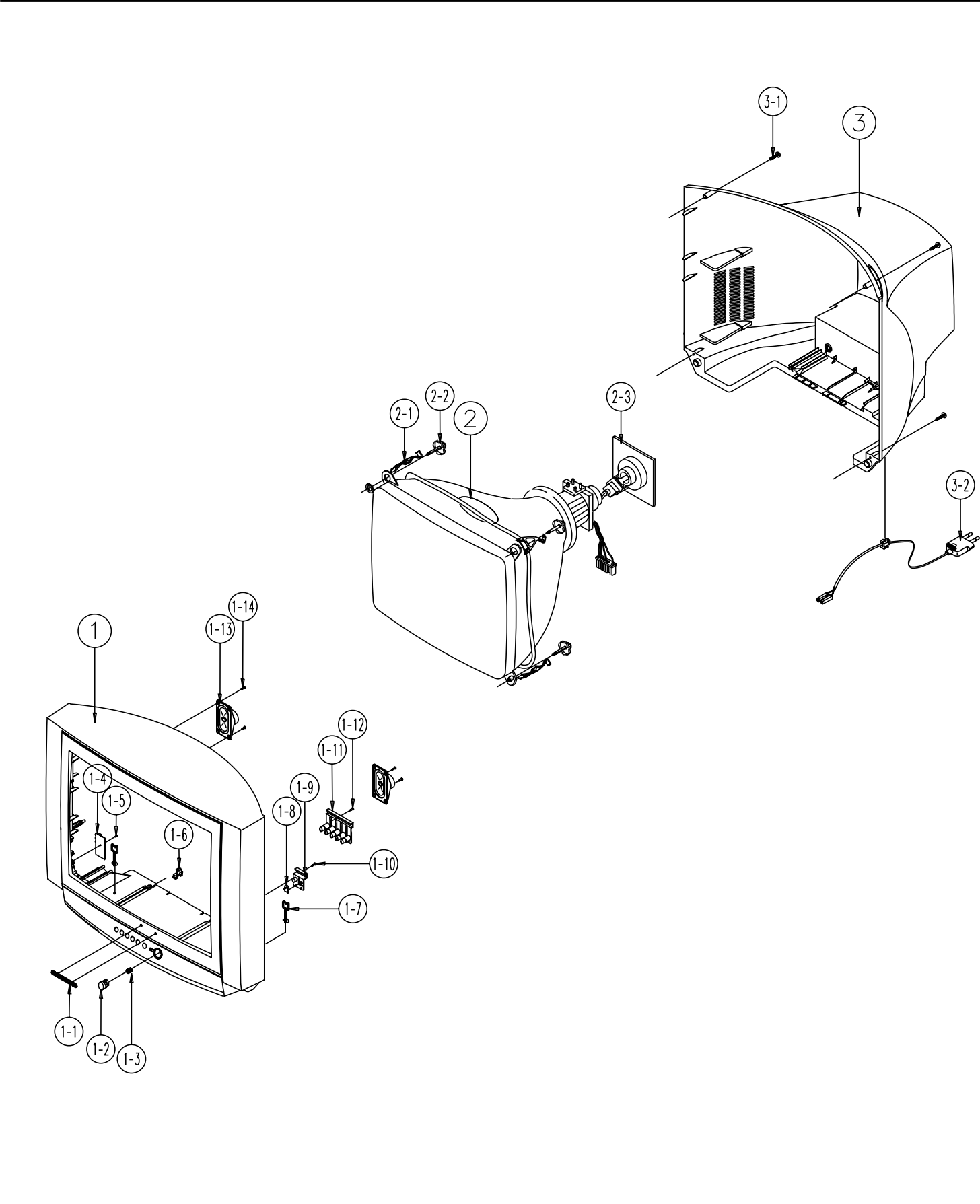
No	Code No	Description;Specification	Q'ty	Remark	
1	AA91-00675A	ASSY CABINET FRONT;21F5,SV704P CIS KS1A	1		
	AA64-01703B	CABINET FRONT;21F5 KS1A,SV704P ML RUS,HI	1		
	1-1	AA64-70010B	BADGE-BRAND;AL,SS R2000 25,SILVER,L50,-,	1	
	1-2	AA64-01705B	KNOB POWER;21F5,ABS,G3676,NO-SILK,HB	1	
	1-3	AA61-60003J	SPRING-CS;-SUS304,0.5,OD6,H12,N7;-,-,-	1	
	1-4	AA61-40113A	STOPPER-PCB;501H,HIPS;-,-,HB,NTR,-	1	
	1-5	AA95-01118A	ASSY-A/V SIDE;KS1A,PAL,MONO	1	
	1-6	AA41-00412A	PCB-A/V SIDE;CS21F5,FR-1,1L,A,1.6T,245x2	1	
	1-7	AA65-00011C	CLAMP-WIRE;ALL MODEL,NYLON 66,V2,NTR,25M	1	
	1-8	AA64-01706B	WINDOW-RMC,LED;21F5,ACRYL,CLEAR	1	
	1-9	6003-001019	SCREW-TAPTITE;RH,+,B,M4,L12,ZPC(BLK),SWR	1	WRL+CF
	1-10	AA64-01707B	KNOB CONTROL;21F5,ABS,G3676,HB	1	
	1-11	6003-001019	SCREW-TAPTITE;RH,+,B,M4,L12,ZPC(BLK),SWR	1	KC+CF
1-12	AA96-10140B	ASSY-SPEAKER;-16OHM,3W,3001-001039,AA39	2		
1-13	6003-001019	SCREW-TAPTITE;RH,+,B,M4,L12,ZPC(BLK),SWR	4	SPK+CF	
2	AA03-10024T	CRT-COLOR;-A51KQJ63X(H),+380mG,21,90de	1		
	2-1	AA65-30107A	CLAMP-D,COIL;NYLON 66,V2,NTR,-,20-22 INC	4	
	2-2	AA60-10050R	SCREW-ASSY;-SWRCH18A,M5,L31.5,HH,+,WC,-	4	CRT+CF
3	AA64-01704B	CABINET BACK;21F5,HIPS,V2,BLK	1		
	3-1	AA60-10050T	SCREW-TAPPING;-SWRCH18A,M4,L20,RH,+,2S,	4	CB+CF
	3-2	AA42-00003A	ANT ROD;-3S,720mm,ABS,UL/CSA,-	1	
4	AA96-20109B	ASSY-POWER,CORD;-CP2/NO(4.0),H/C250,KKP	1		

6-5 CS2173S/BWT



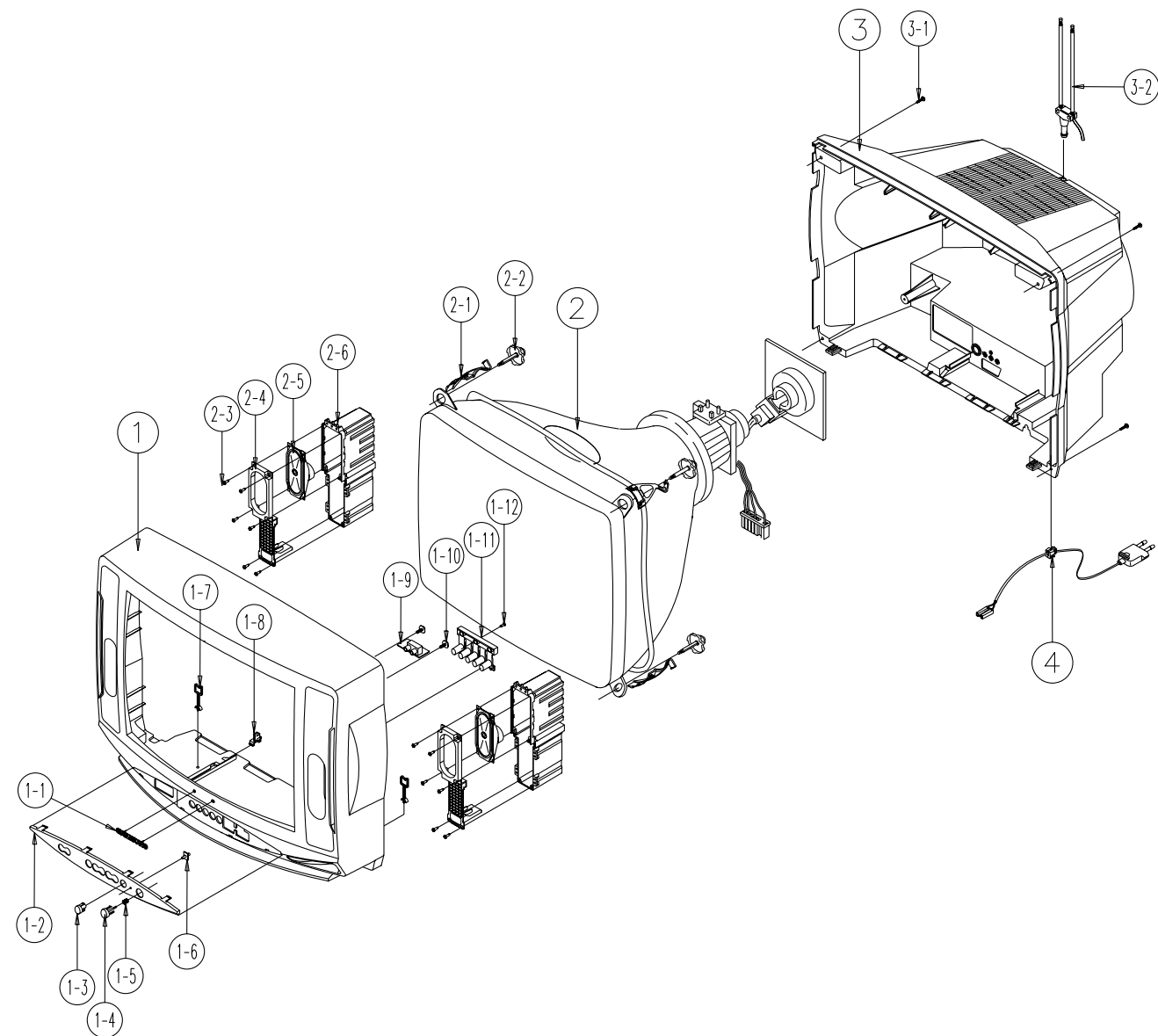
No	Code No	Description;Specification	Q'ty	Remark
1	AA91-00545A	ASSY CABINET FRONT;DP,5373,(SPK) 64-0023	1	
2	AA61-40010A	BOSS-WING;-;HIPS,-,-,-,NTR,HB	2	
3	6006-001095	SCREW-ASS'Y TAPT;WP,BH,+;M4,L12,ZPC(YEL)	2	
4	AA95-01042B	ASSY-PCB,A/V FRONT;DP,2139,KS1A,AA95-900	1	
5	AA61-40007A	STOPPER-PCB;5038.5368,HIPS HB,-,-,-,NTR,	1	
6		INLAY		
7	AA64-70127F	BADGE-BRAND;AL,SAMSUNG,SILVER,L40,R800,N	1	
8	AA64-10132A	KNOB-POWER;-;5373,NO-COATING,ABS,HB,BLK	1	
9	AA64-40083A	WINDOW-REMOCON;-;5373,-;PC,V0,VIOLET,-	1	
10	AA61-60003T	SPRING-CS;-;SUS304,0.5,OD7,H13.5,N5,-,-,-	1	
11	AA63-50097A	GRILLE-WOOFER;-;5373,PA110,SECC,T0.5,-,-	1	
12	AA64-40183A	INDICATOR-LED;-;5373,-;ACRYL,-,-,-	1	
13	AA64-10041A	KNOB-CONTROL;-;5373,-;ABS,HB,BLK	1	
14	AA96-10140B	ASSY-SPEAKER;-;16OHM,3W,3001-001039,AA39	1	
15	6003-001026	SCREW-TAPTITE;RH,+;B,M4,L15,ZPC(BLK),SWR	2	SPK+CF
16	AA65-30107A	CLAMP-D,COIL;NYLON 66,V2,NTR,-,-20-22 INC	4	
17	AA60-10050R	SCREW-ASSY;-;SWRCH18A,M5,L31.5,HH,+;WC,-	4	
18	AA03-10024T	CRT-COLOR;-;A51KQJ63X(H),+380mG,21,90de	1	CRT+CF
19	3704-001105	SOCKET-CRT;11P,20PI,26.5PI,NI,-	1	
20	AA64-30710D	CABINET-BACK;-;5338.73,-;HIPS,V2,BLK,-,-	1	
21	AA42-00003A	ANT ROD;-;3S,720mm,ABS,UL/CSA,-	1	
22	6003-001026	SCREW-TAPTITE;RH,+;B,M4,L15,ZPC(BLK),SWR	4	CB+CF
23	AA96-20109B	ASSY-POWER,CORD;-;CP2/NO(4.0),H/C250,KKP	1	

6-6 CS21D8S/NWT



No	Code No	Description;Specification	Q'ty	Remark
1	AA91-00617B	ASSY CABINET FRONT;DP;21D8 CIS,(SPK)SV90	1	
	AA64-01423E	CABINET FRONT;21D8 CIS,SV907P MDP,HIPS,H	1	
1-1	AA64-70123B	BADGE-BRAND;AL,R2000,SILVER,L=50,SAMSUNG	1	
1-2	AA64-01425B	KNOB POWER;21D8,ABS,-,G3676,SV907P,HB,-,	1	
1-3	AA61-60003J	SPRING-CS;- ,SUS304,0.5,OD6,H12,N7,-,-,-	1	
1-4	AA95-00944B	ASSY-A/V SIDE;DP - 21D8,KS1A,PAL,MONO A	1	
1-5	6002-000522	SCREW-TAPPING;TH,+,2,M4,L15,ZPC(BLK),SWR	1	AV+CF
1-6	AA61-40113A	STOPPER-PCB;501H,HIPS,-,-,HB,NTR,-	1	
1-7	AA65-30105A	CLAMP-WIRE;NYLON 66,V2,NTR,15MM,ALL MODE	1	
1-8	AA64-01011B	INDICATOR LED;29D8,ACRYL,-,CLR,-,-,-	1	
1-9	AA64-01426B	WINDOW REMOCON;21D8,PC,-,-,-,VOILET,-,-	1	
1-10	6003-001026	SCREW-TAPTITE;RH,+,B,M4,L15,ZPC(BLK),SWR	1	WIN+CF
1-11	AA64-01012B	KNOB CONTROL;29D8,ABS,-,G3676,SV-907P,HB	1	
1-12	6003-001026	SCREW-TAPTITE;RH,+,B,M4,L15,ZPC(BLK),SWR	1	KC+CF
1-13	3001-000274	SPEAKER;5W,8ohm,90dB,160Hz	2	
1-14	6003-001019	SCREW-TAPTITE;RH,+,B,M4,L12,ZPC(BLK),SWR	8	SPK+CF
2	AA03-10024T	CRT-COLOR;- ,A51KQJ63X(H),+380mG,21,90de	1	
	AA65-30107A	CLAMP-D,COIL;NYLON 66,V2,NTR,-,20-22 INC	4	
	AA60-10050R	SCREW-ASSY;- ,SWRCH18A,M5,L31.5,HH,+,WC,-	4	CRT+CF
3	AA64-01422D	CABINET BACK;21D8,HIPS,V2,BLK	1	
3-1	AA60-10050T	SCREW-TAPPING;- ,SWRCH18A,M4,L20,RH,+,2S,	4	CB+CF
3-2	AA96-20109B	ASSY-POWER,CORD;- ,CP2/NO(4.0),H/C250,KKP	1	

6-7 CS21S1S/NWT



No	Code No	Description;Specification	Q'ty	Remark	
1	AA91-00392C	"ASSY CABINET FRONT;DP,21S1 CIS,(SPK)B708	1		
	AA64-31326L	CABINET FRONT;53S1,BK708P PROGUN II,HIPS	1		
	1-1	AA64-70123B	BADGE-BRAND;AL,R2000,SILVER,L=50,SAMSUNG	1	
	1-2	AA64-40515E	DECORATION-FRONT;- ,21S1,KSP213 ML TVI,HI	1	
	1-3	AA64-40513B	WINDOW-REMOCON;- ,50S1 ,- ,PC,V0,VIOLET,-	1	
	1-4	AA64-10790C	KNOB-POWER;- ,33.50S1,NO-SILK,ABS,HB,M/BR	1	
	1-5	AA61-60003J	SPRING-CS;- ,SUS304,0.5,OD6,H12,N7,-,-,-	1	
	1-6	AA64-40514A	INDICATOR-LED;- ,CT50S1 ,- ,ACRYL,- ,CLR,-	1	
	1-7	AA65-30105A	CLAMP-WIRE;NYLON 66,V2,NTR,15MM,ALL MODE	1	
	1-8	AA61-40113A	STOPPER-PCB;501H,HIPS,-,-,-,HB,NTR,-	1	
	1-9	AA95-01048B	ASSY-PCB,A/V FRONT;DP,20S1,KS1A,AA95-000	1	
	1-10	6006-001095	SCREW-ASS'Y TAPT;WP,BH,+ ,M4,L12,ZPC(YEL)	2	
1-11	AA64-10789A	KNOB-CONTROL;- ,50S1 ,- ,ABS,HB,M/BROWN	1		
1-12	6003-001026	SCREW-TAPTITE;RH,+ ,B,M4,L15,ZPC(BLK),SWR	1	KC+CF	
2	AA03-10024T	CRT-COLOR;- ,A51KQJ63X(H),+380mG,21,90de	1		
	2-1	AA65-30107A	CLAMP-D,COIL;NYLON 66,V2,NTR,- ,20-22 INC	4	
	2-2	AA60-10050R	SCREW-ASSY;- ,SWRCH18A,M5,L31.5,HH,+ ,WC,-	4	CRT+CF
	2-3	6003-001026	SCREW-TAPTITE;RH,+ ,B,M4,L15,ZPC(BLK),SWR	8	
	2-4		ASSY-HOLDER,SPK-OPTION		
	2-5	3001-001034	SPEAKER;6W,8ohm,90dB,140Hz	2	
2-6		ASSY-HOLDER,SPK-OPTION			
3	AA64-31327B	CABINET-BACK;- ,53S1 ,- ,HIPS,V2,BLK,-,-	1		
	3-1	6002-000514	SCREW-TAPPING;RH,+ ,2,M4,L15,ZPC(BLK),SWR	6	CB+CF
	3-2	AA42-00003A	ANT ROD;- ,3S,720mm,ABS,UL/CSA,-	1	
4	AA96-20109B	ASSY-POWER,CORD;- ,CP2/NO(4.0),H/C250,KKP	1		